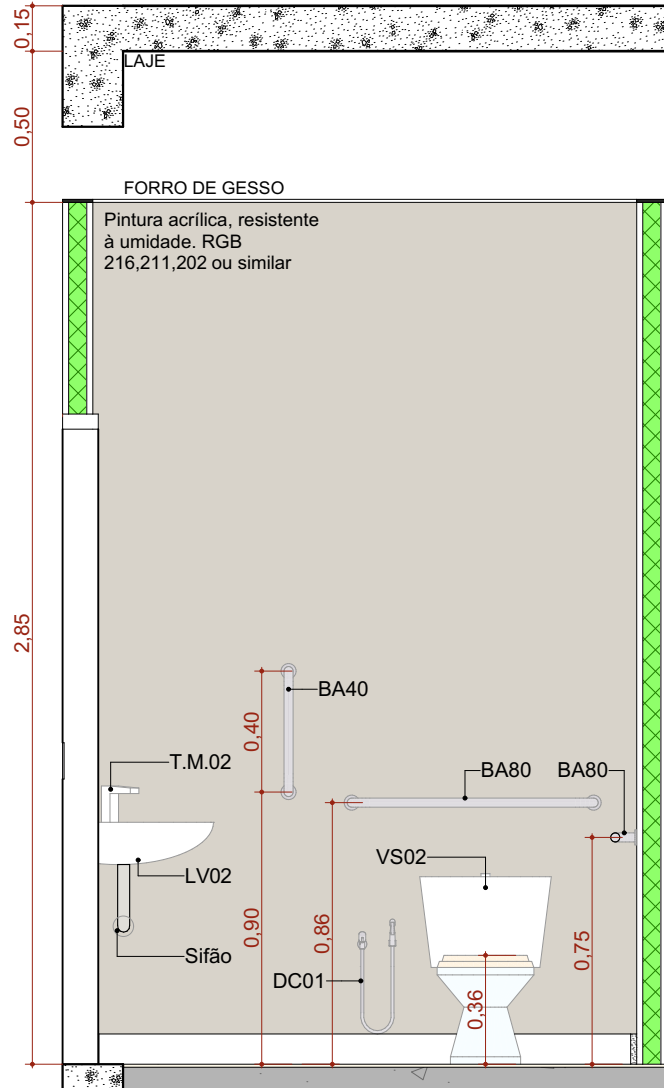


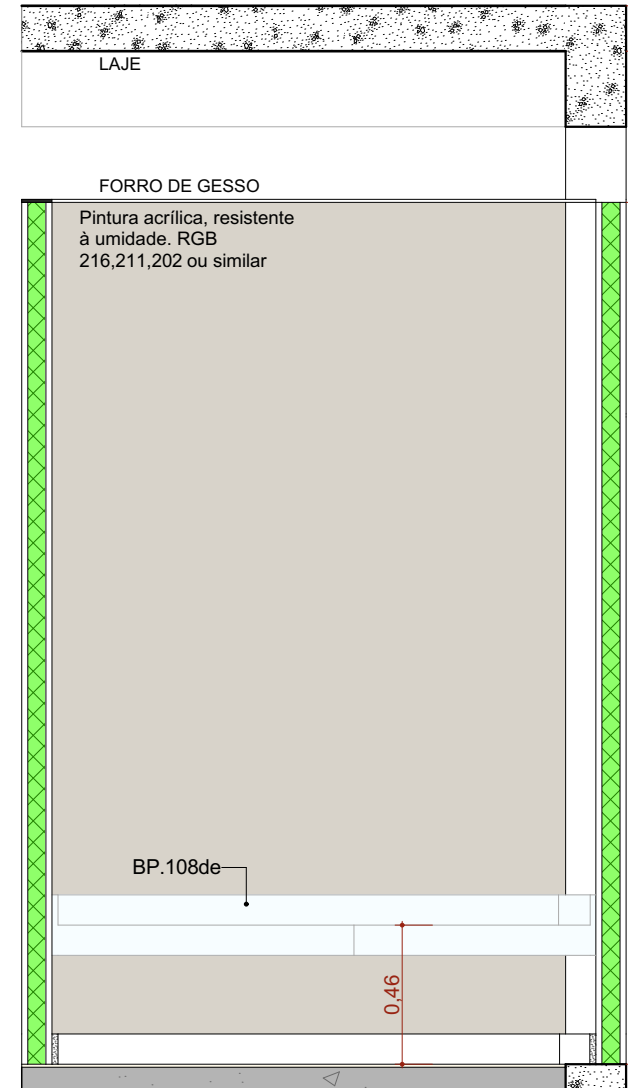
A.M.01 Sanitário Familiar

Escala: 1:25



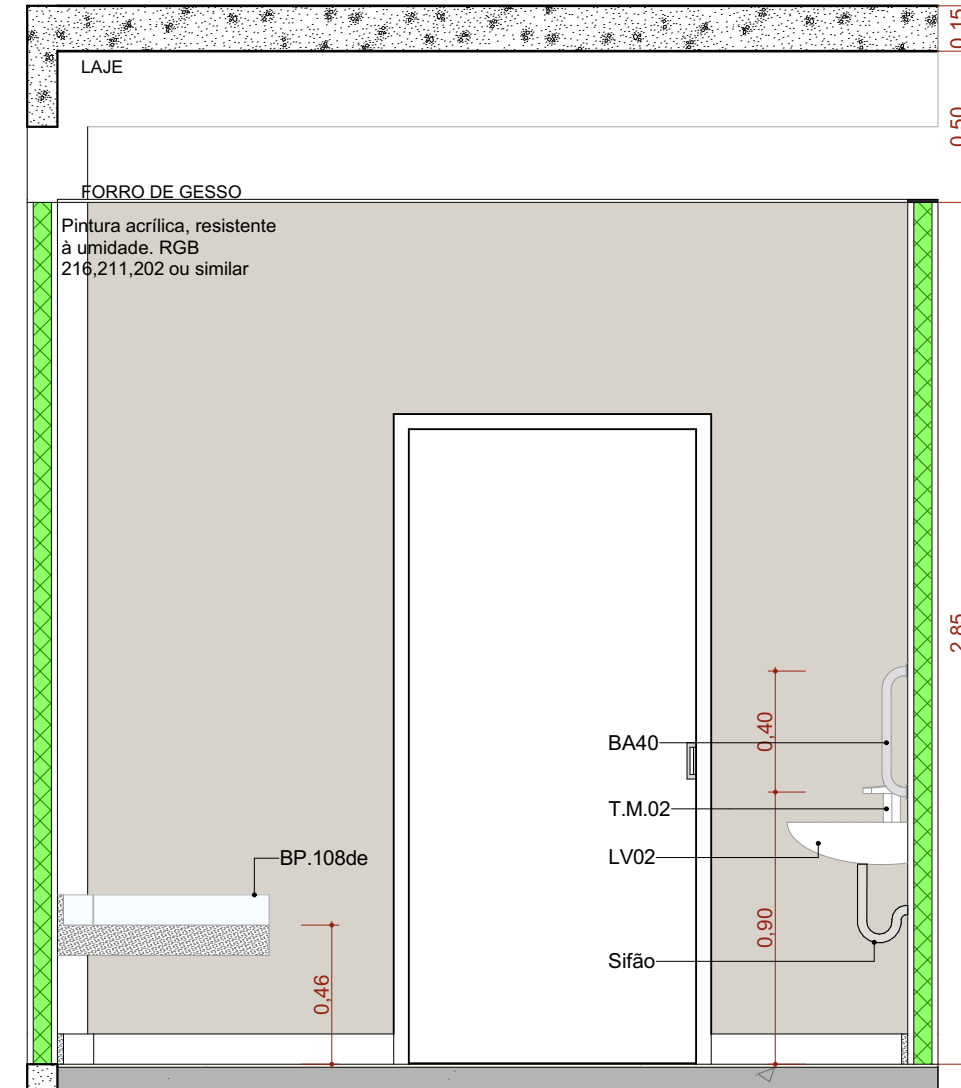
A.M.01 VISTA 01

Escala: 1:25



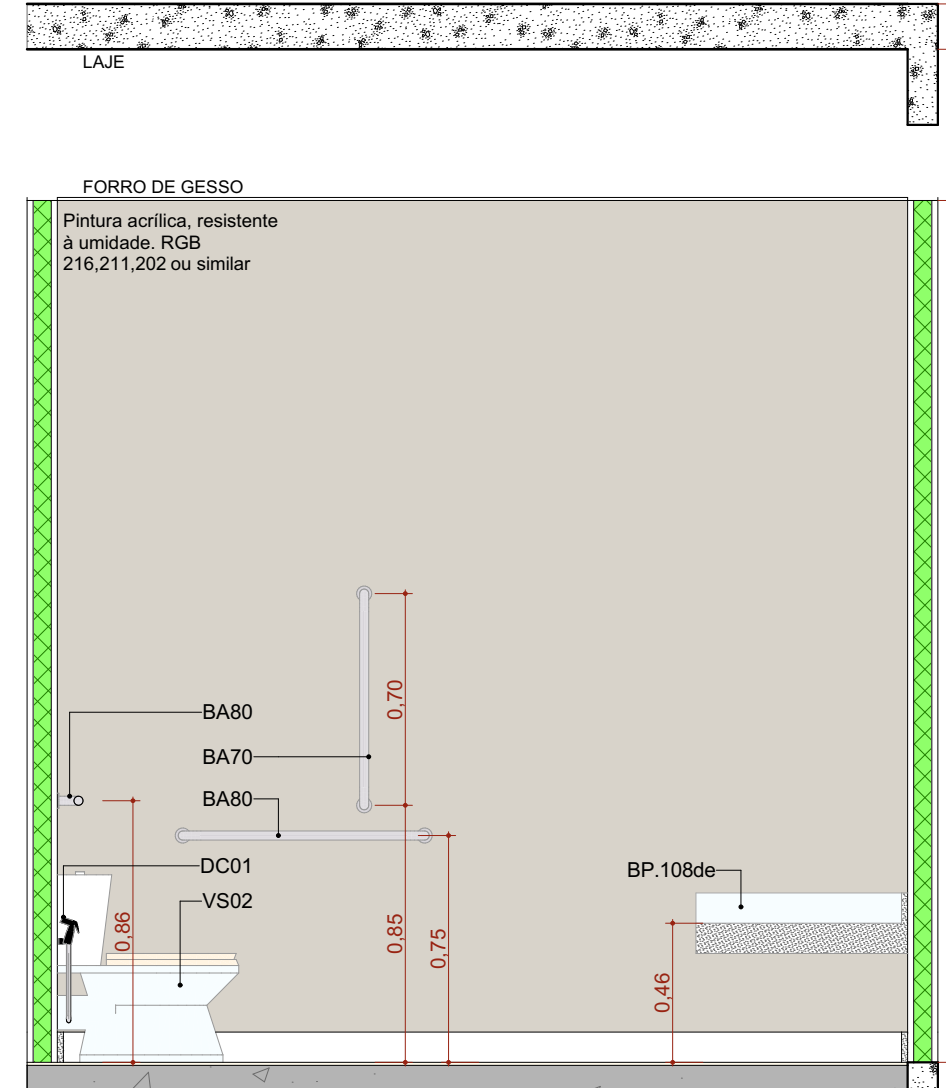
A.M.01 VISTA 02

Escala: 1:25



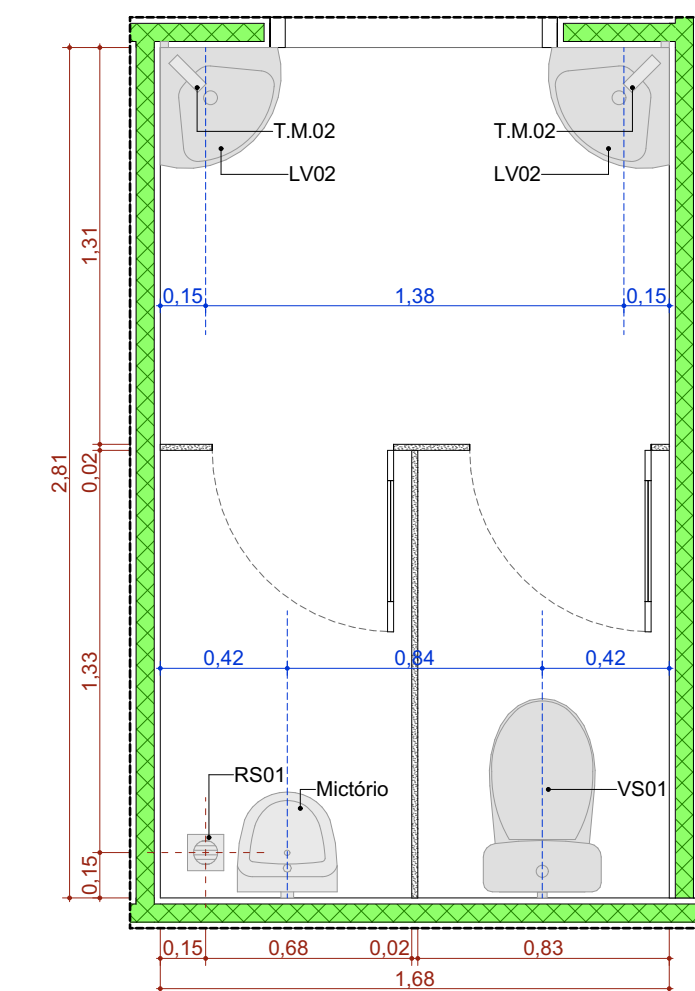
A.M.01 VISTA 03

Escala: 1:25



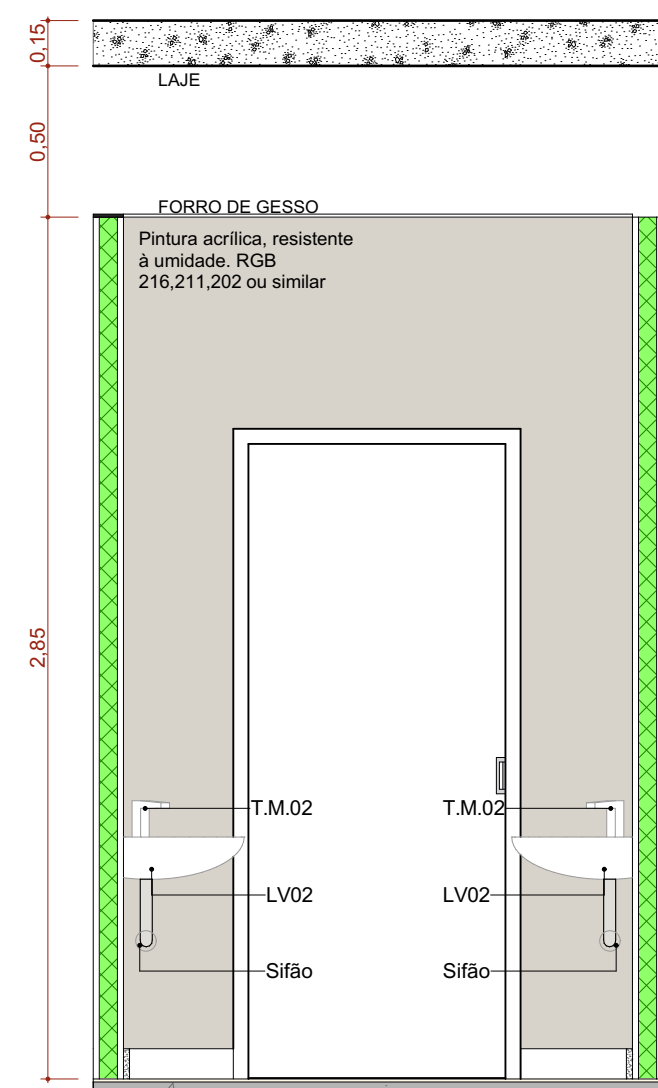
A.M.01 VISTA 04

Escala: 1:25



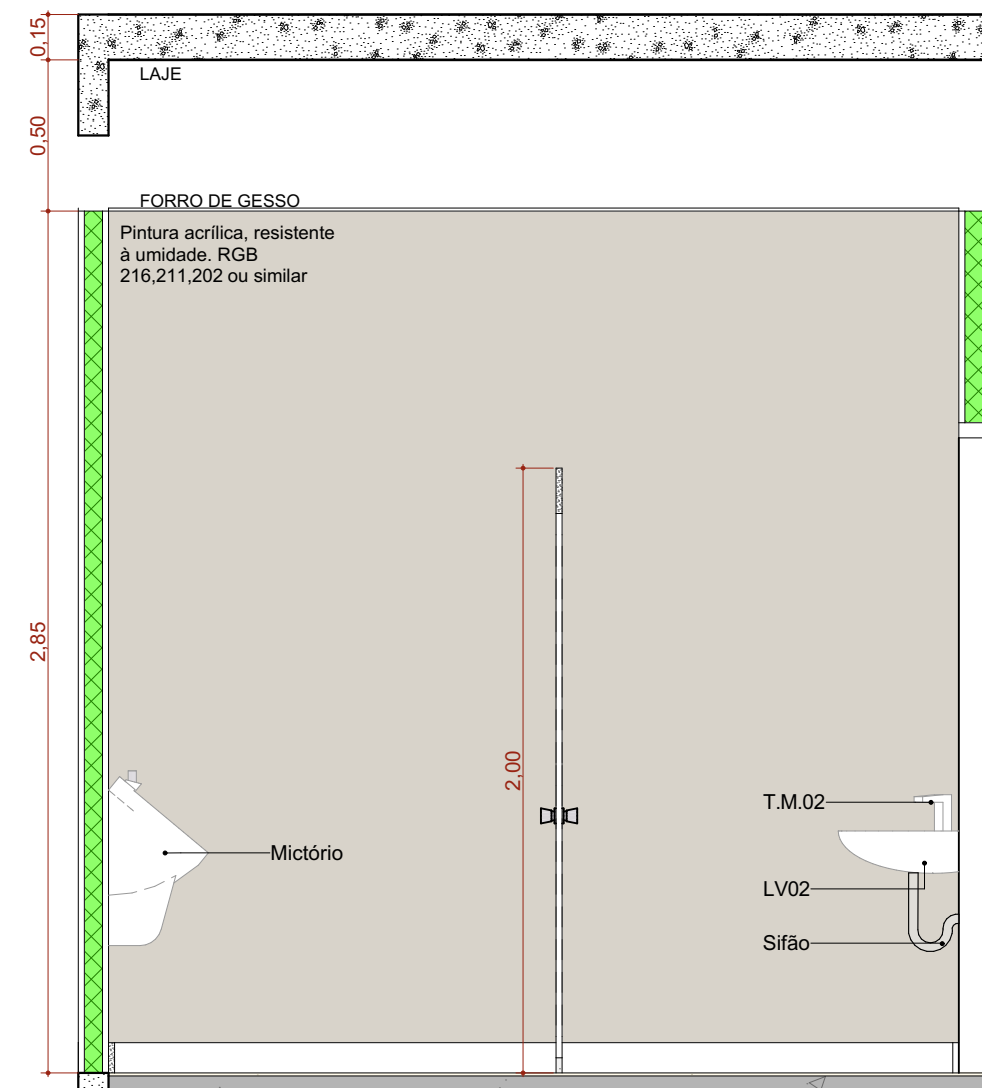
A.M.02 Sanitário Masculino

Escala: 1:25



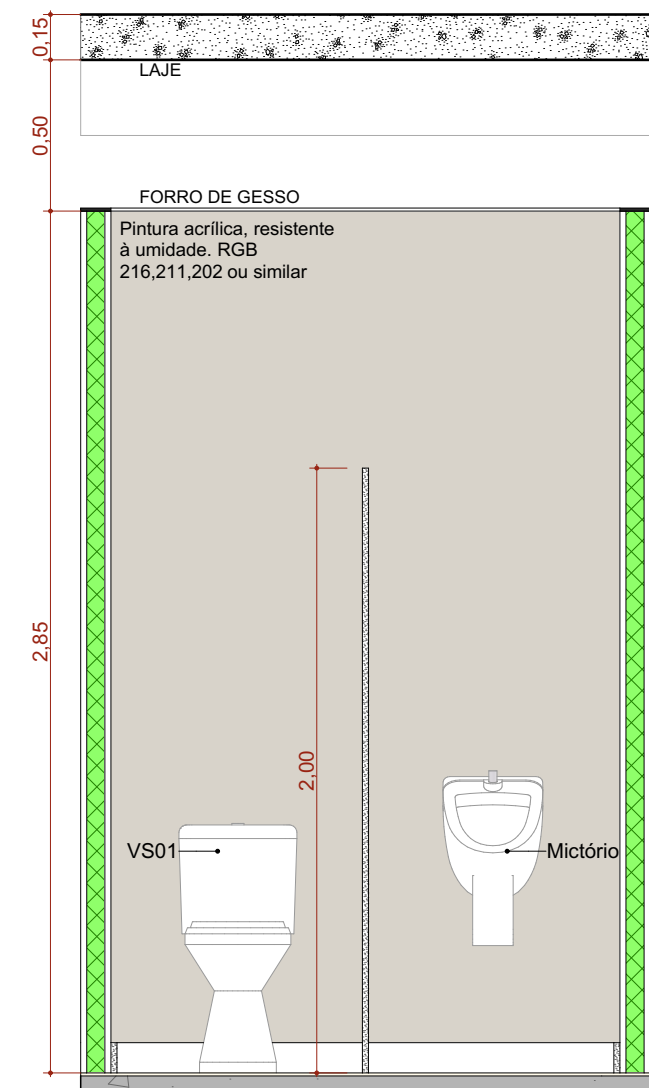
A.M.02 VISTA 01

Escala: 1:25



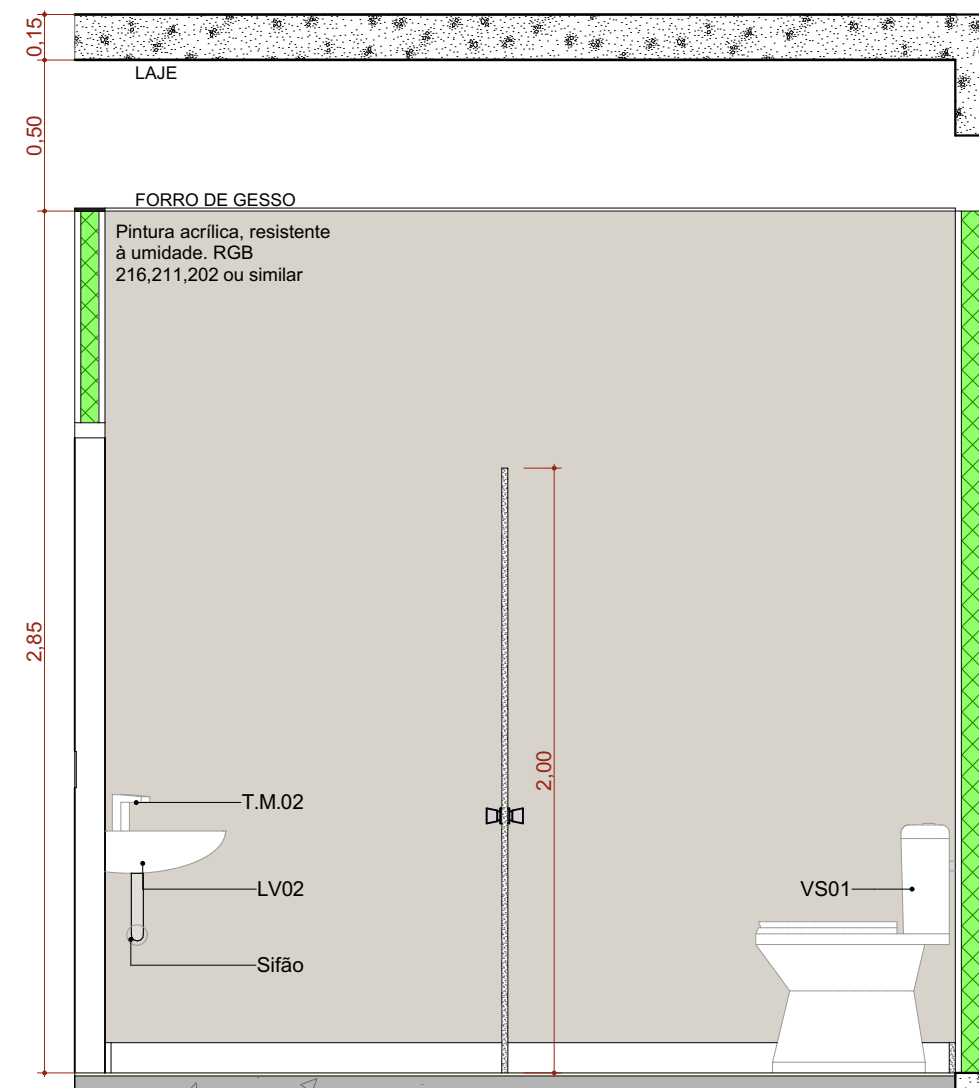
A.M.02 VISTA 02

Escala: 1:25



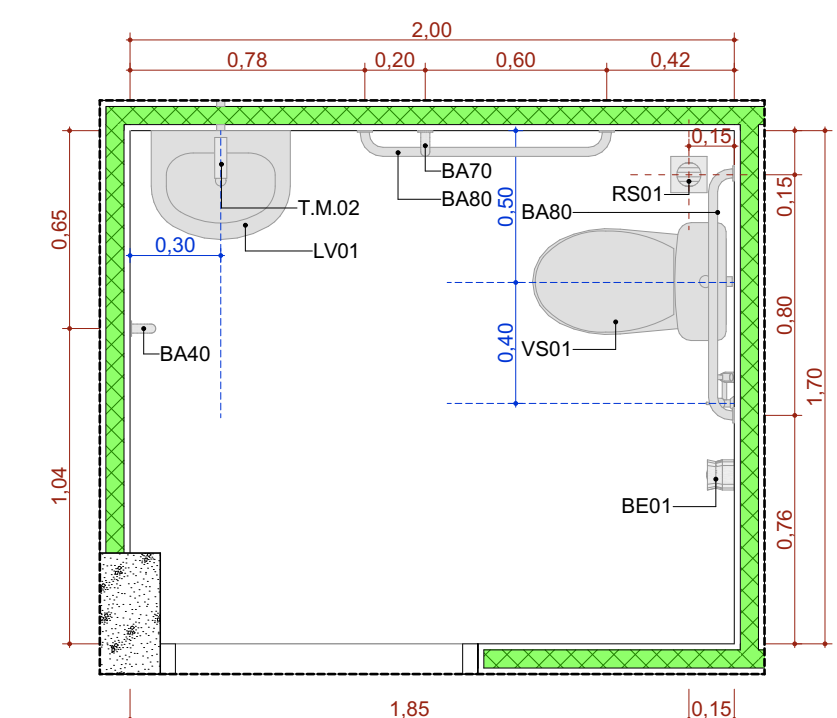
A.M.02 VISTA 03

Escala: 1:25



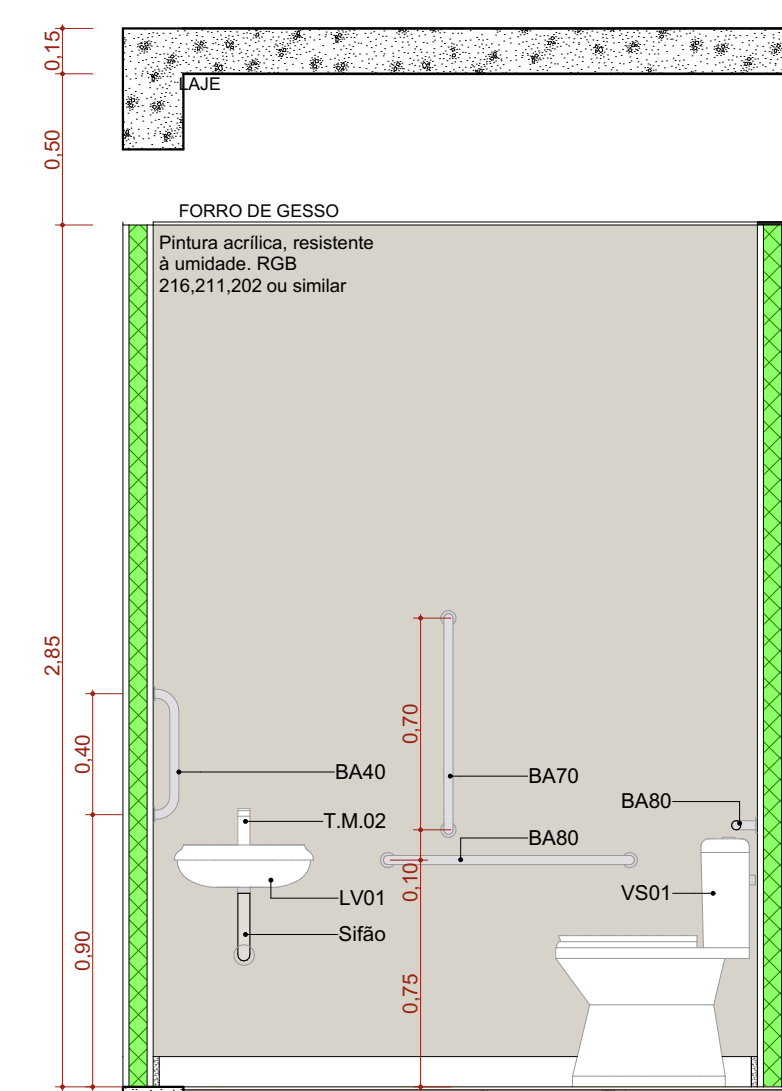
A.M.02 VISTA 04

Escala: 1:25



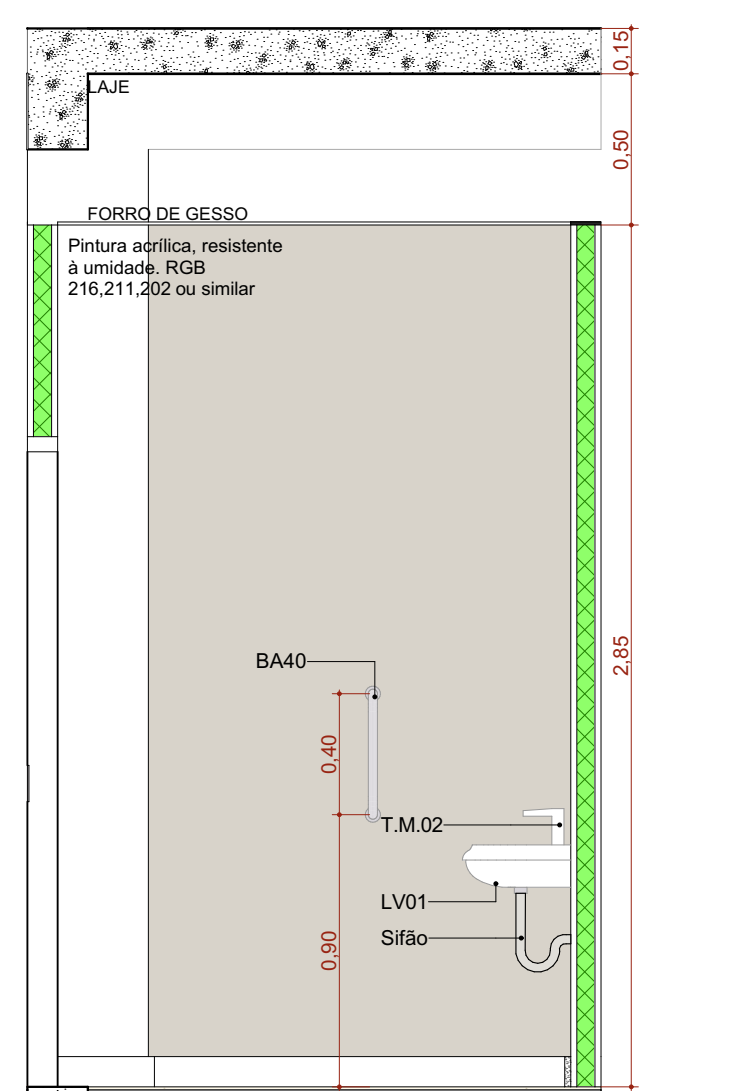
A.M.04 Sanitário PCD

Escala: 1:25



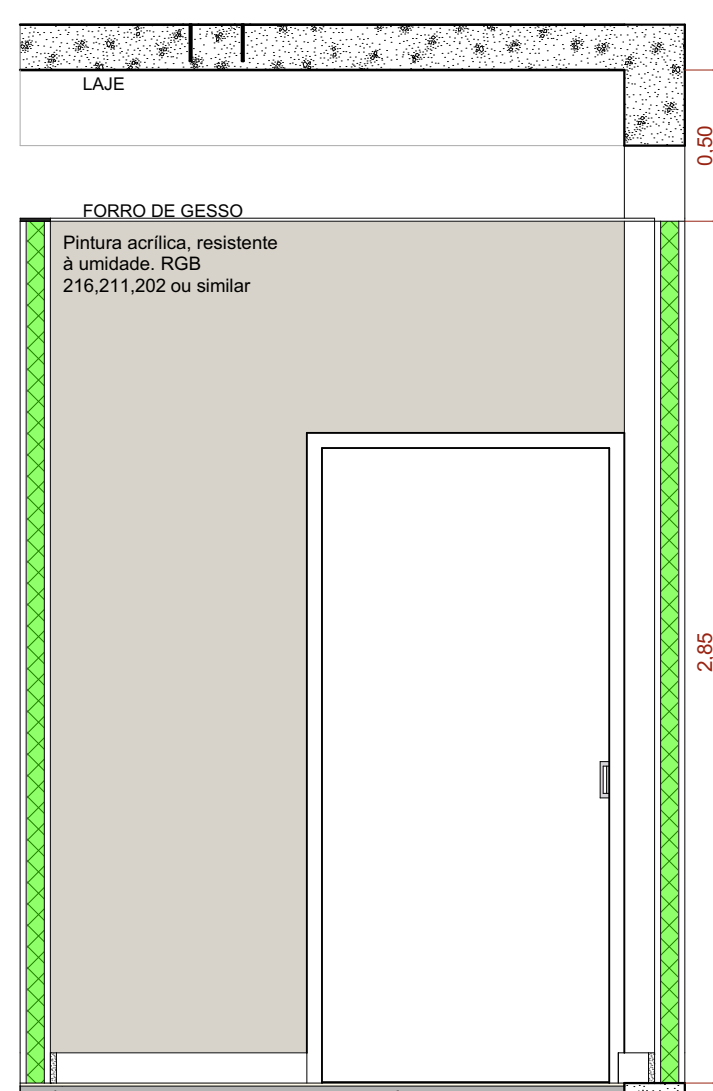
A.M.04 VISTA 01

Escala: 1:25



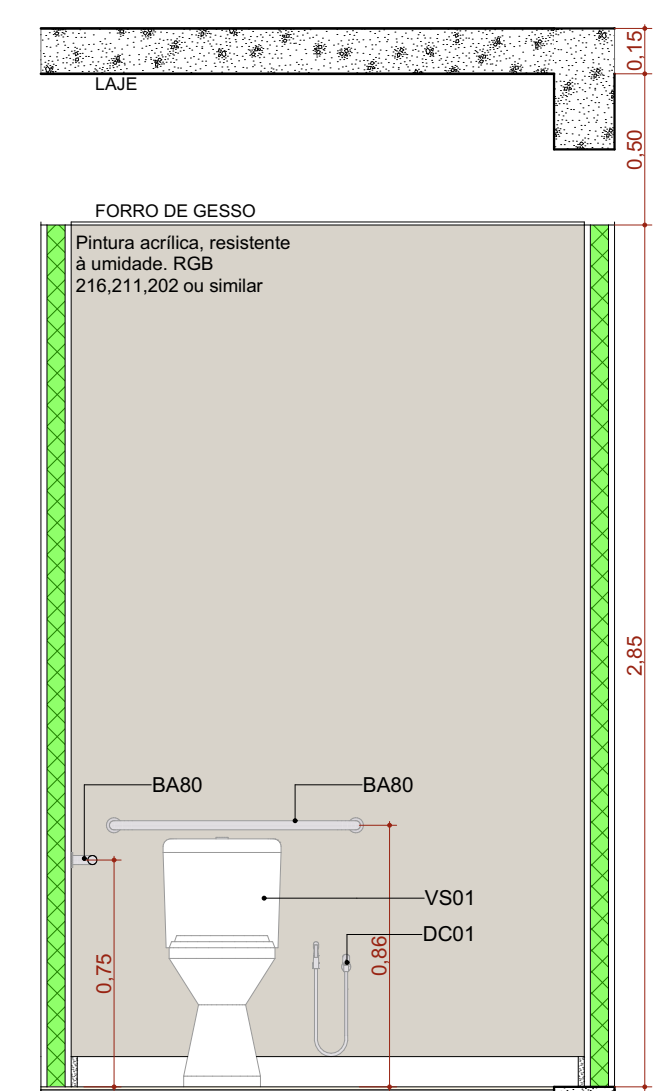
A.M.04 VISTA 02

Escala: 1:25



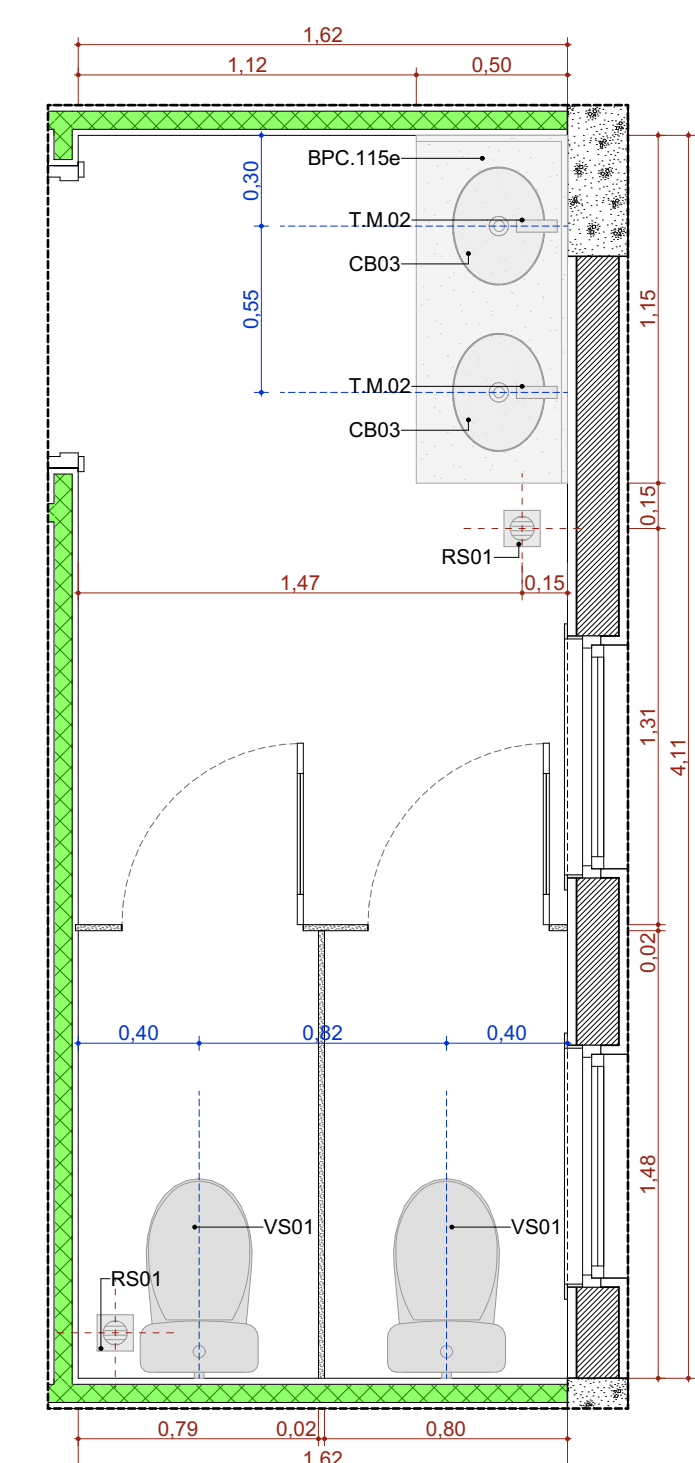
A.M.04 VISTA 03

Escala: 1:25



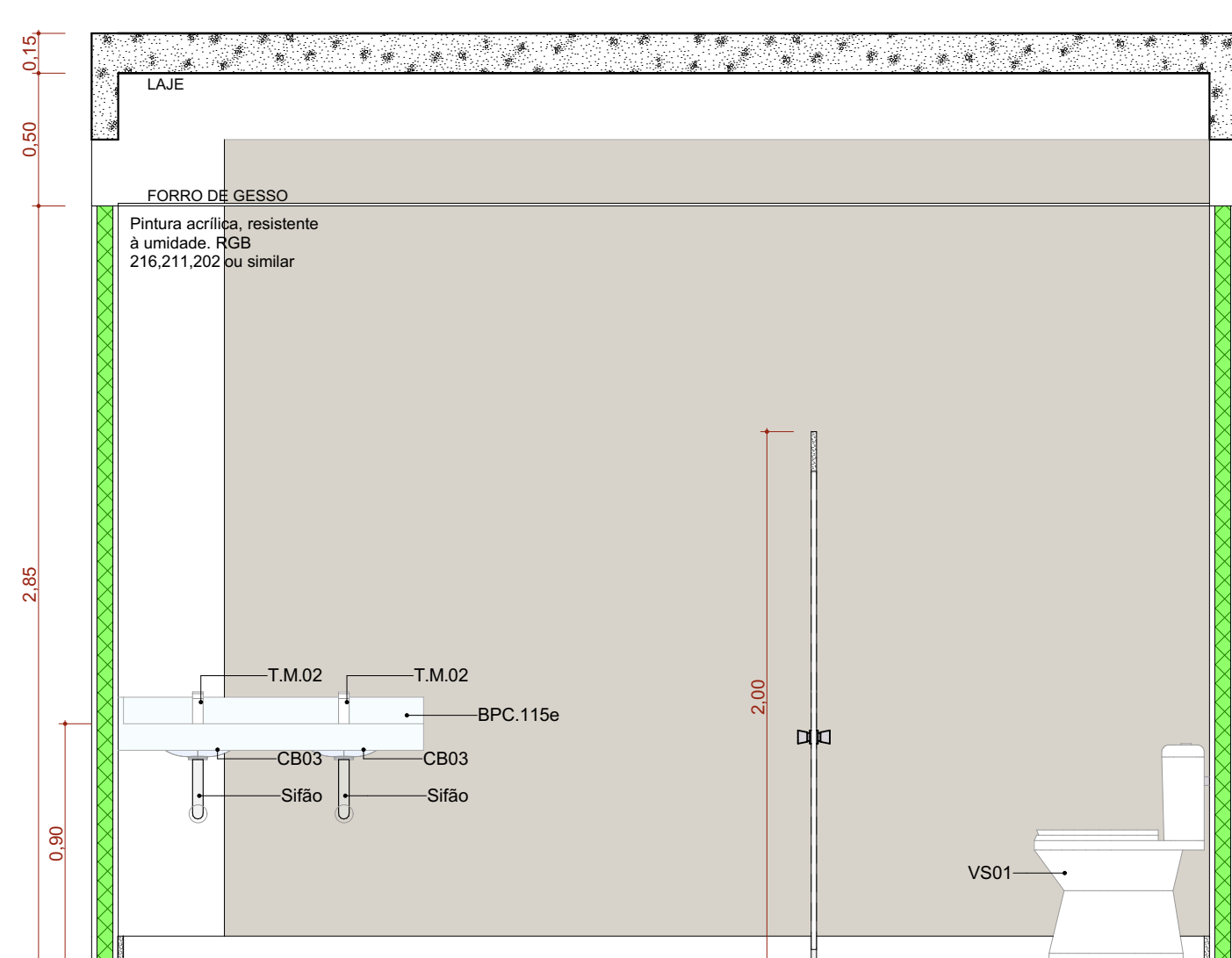
A.M.04 VISTA 04

Escala: 1:25



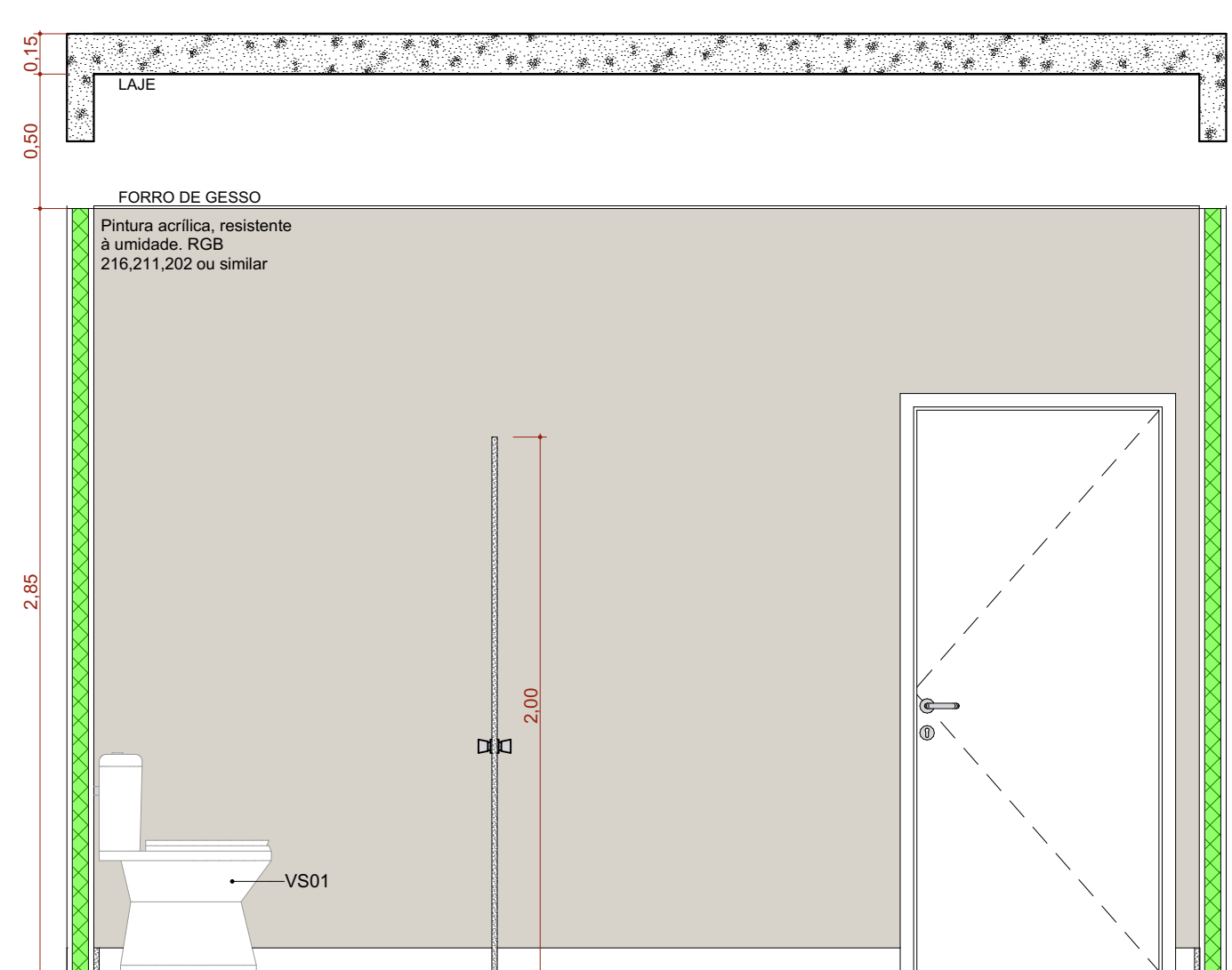
A.M.03 Sanitário Feminino

Escala: 1:25



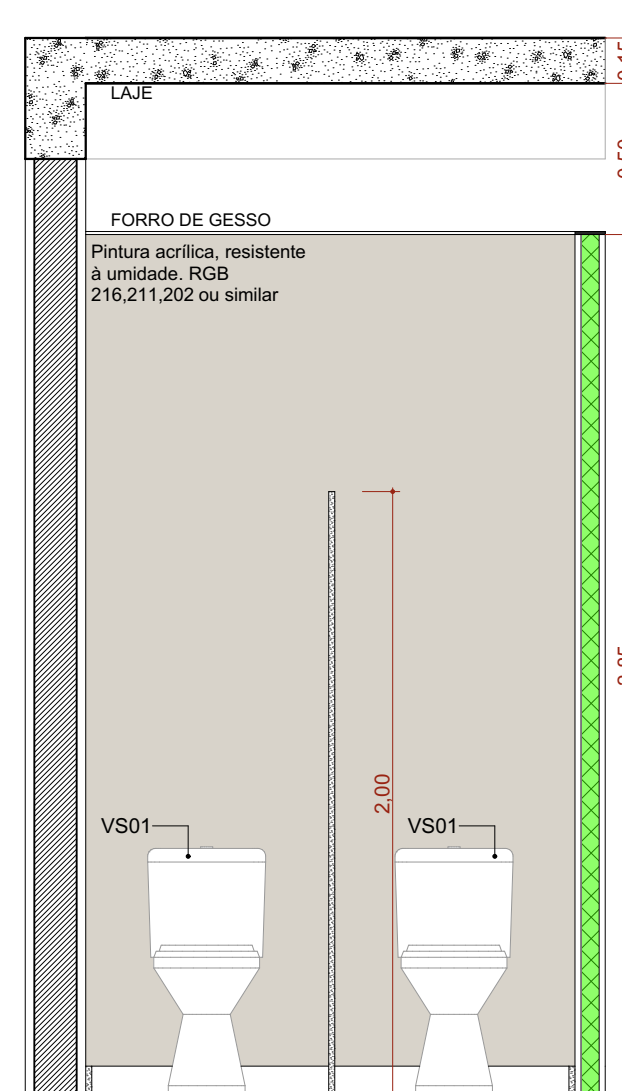
A.M.03 VISTA 01

Escala: 1:25



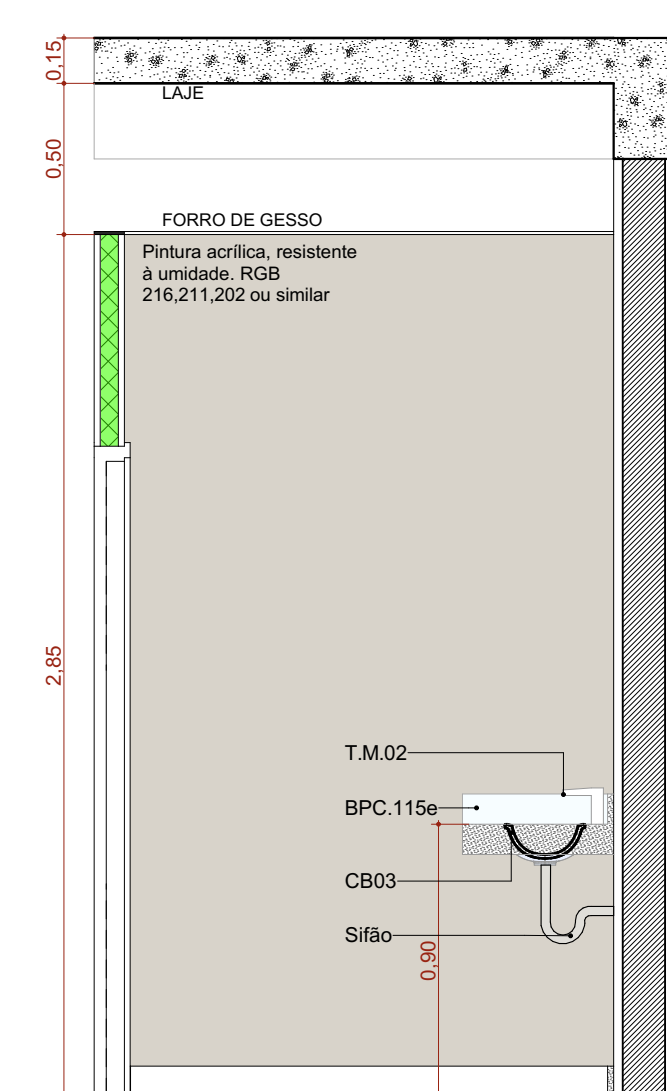
A.M.03 VISTA 02

Escala: 1:25



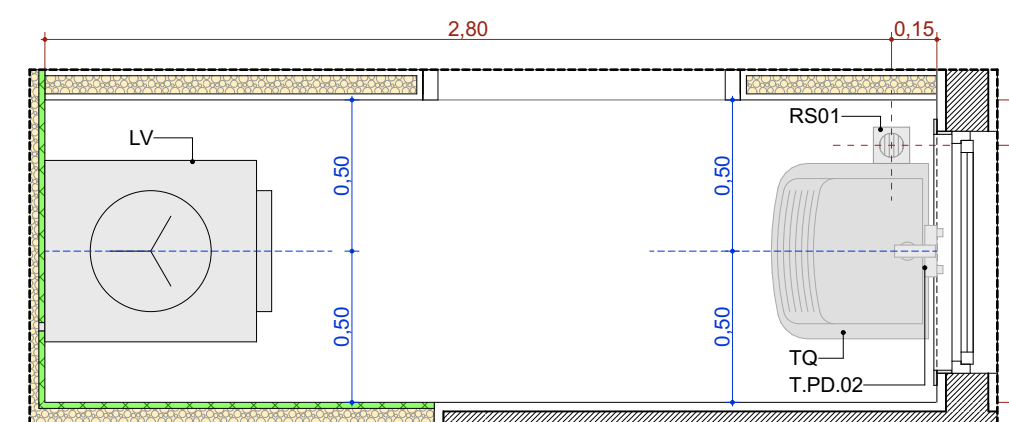
A.M.03 VISTA 03

Escala: 1:25



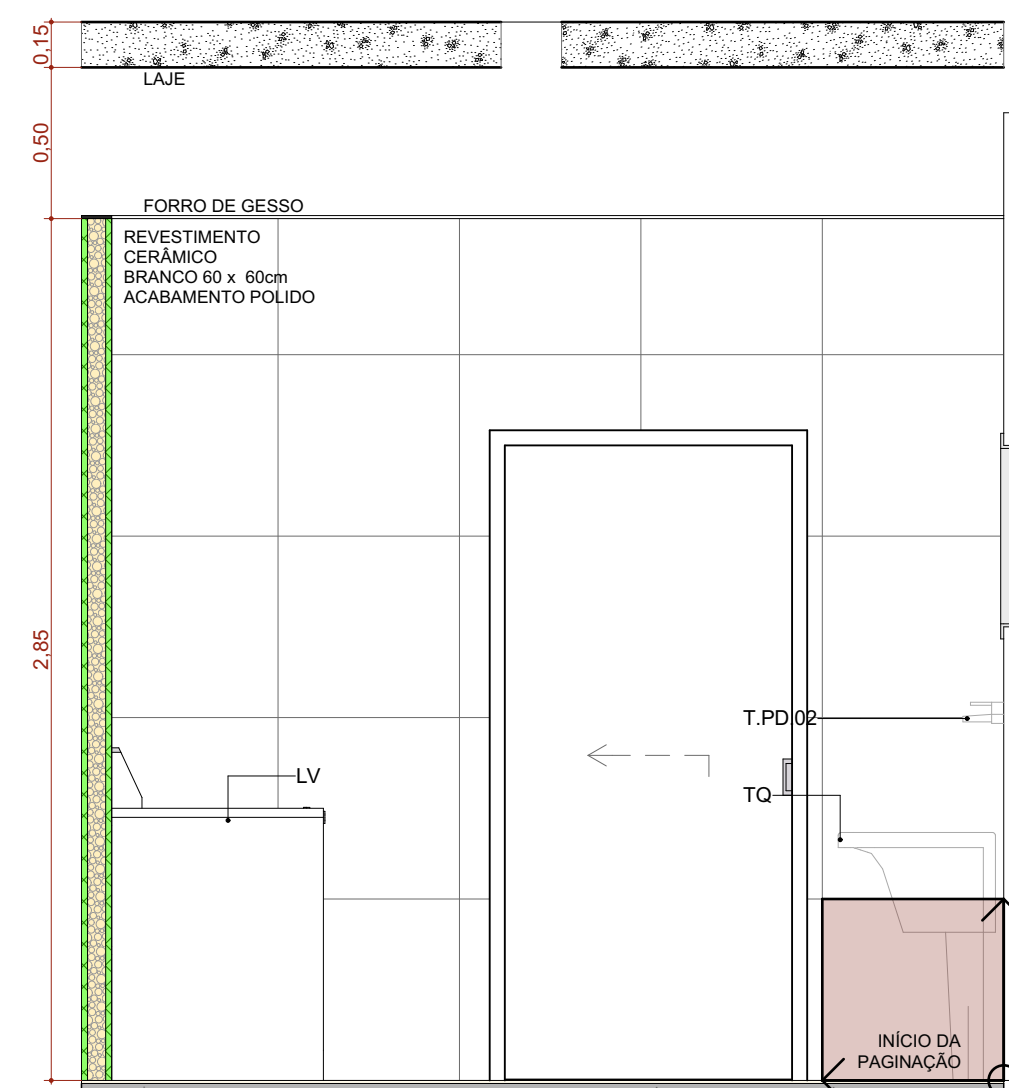
A.M.03 VISTA 04

Escala: 1:25



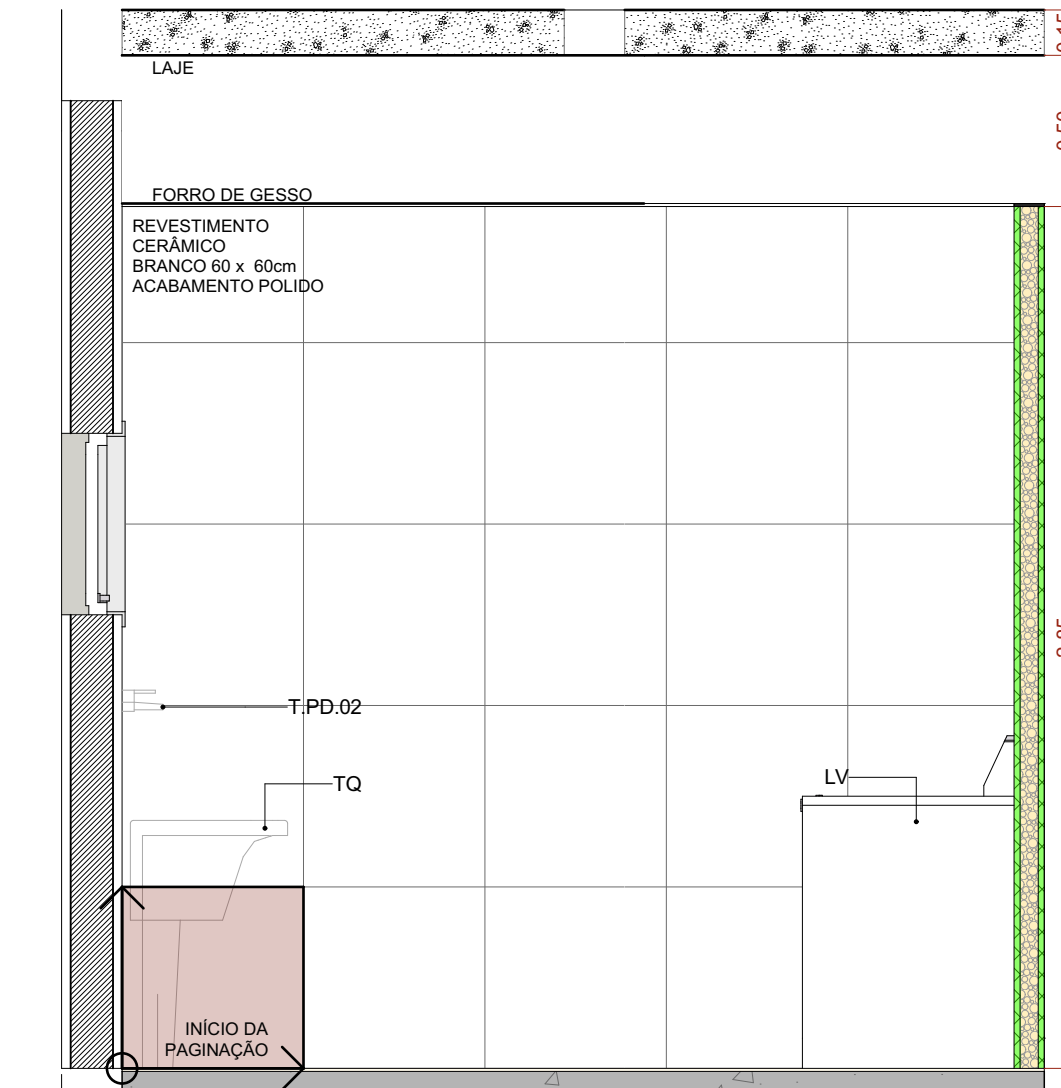
A.M.05 DML

Escala: 1:25



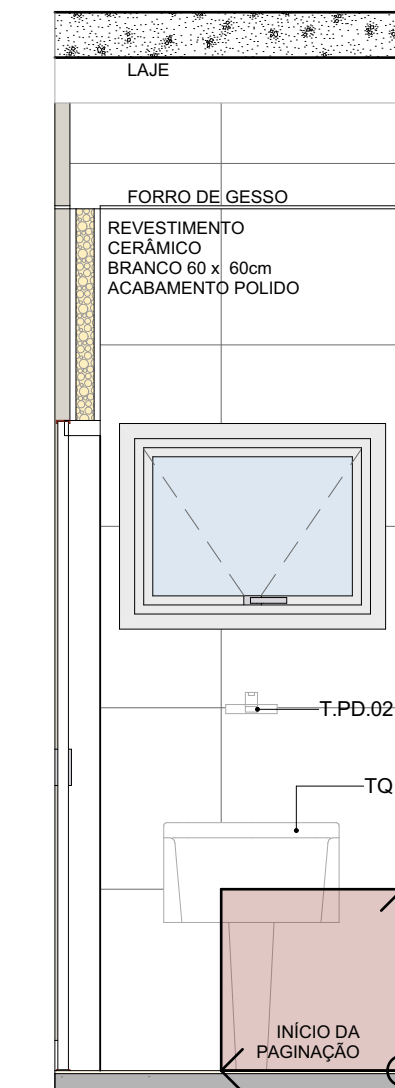
A.M.05 VISTA 03

Escala: 1:25



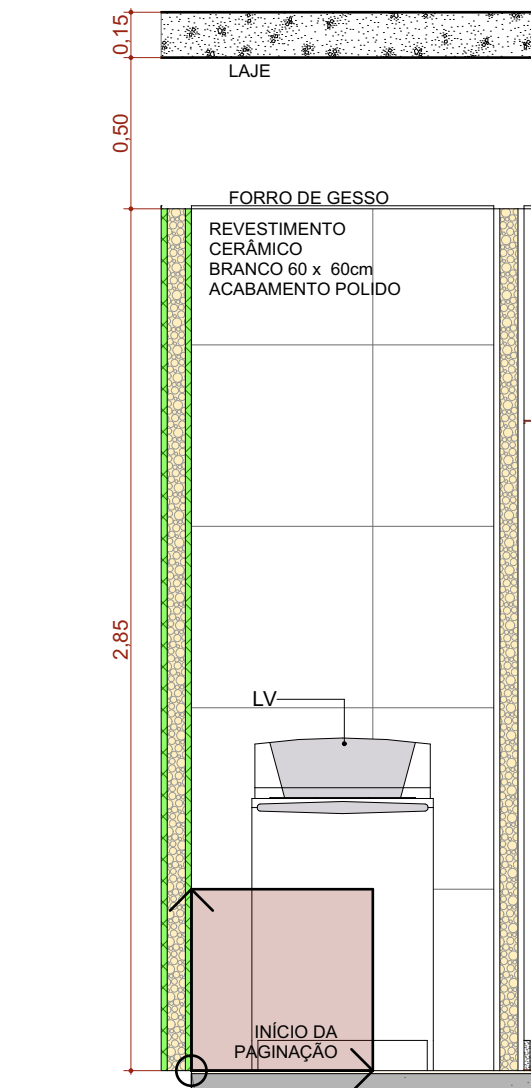
A.M.05 VISTA 01

Escala: 1:25



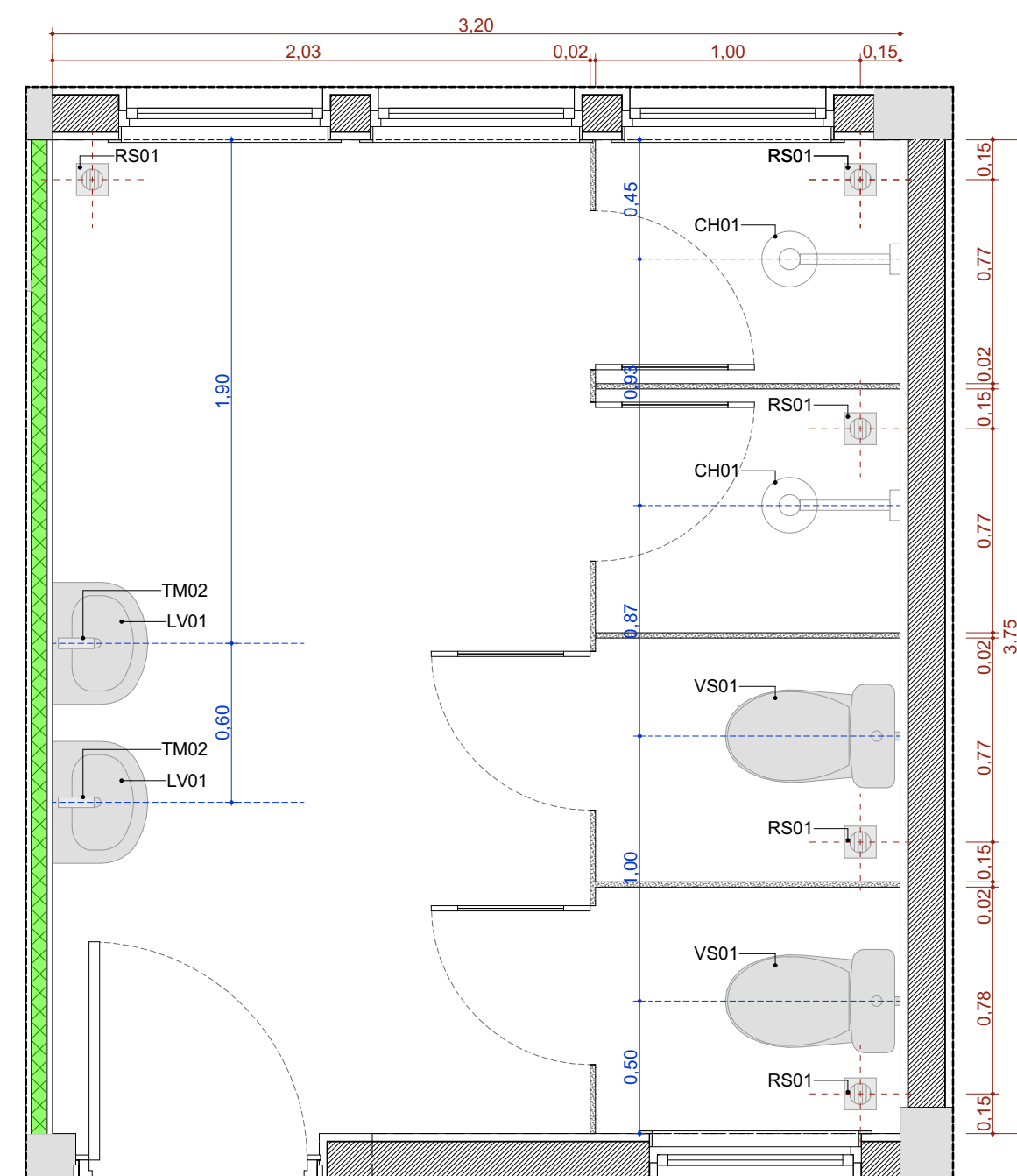
A.M.05 VISTA 02

Escala: 1:25



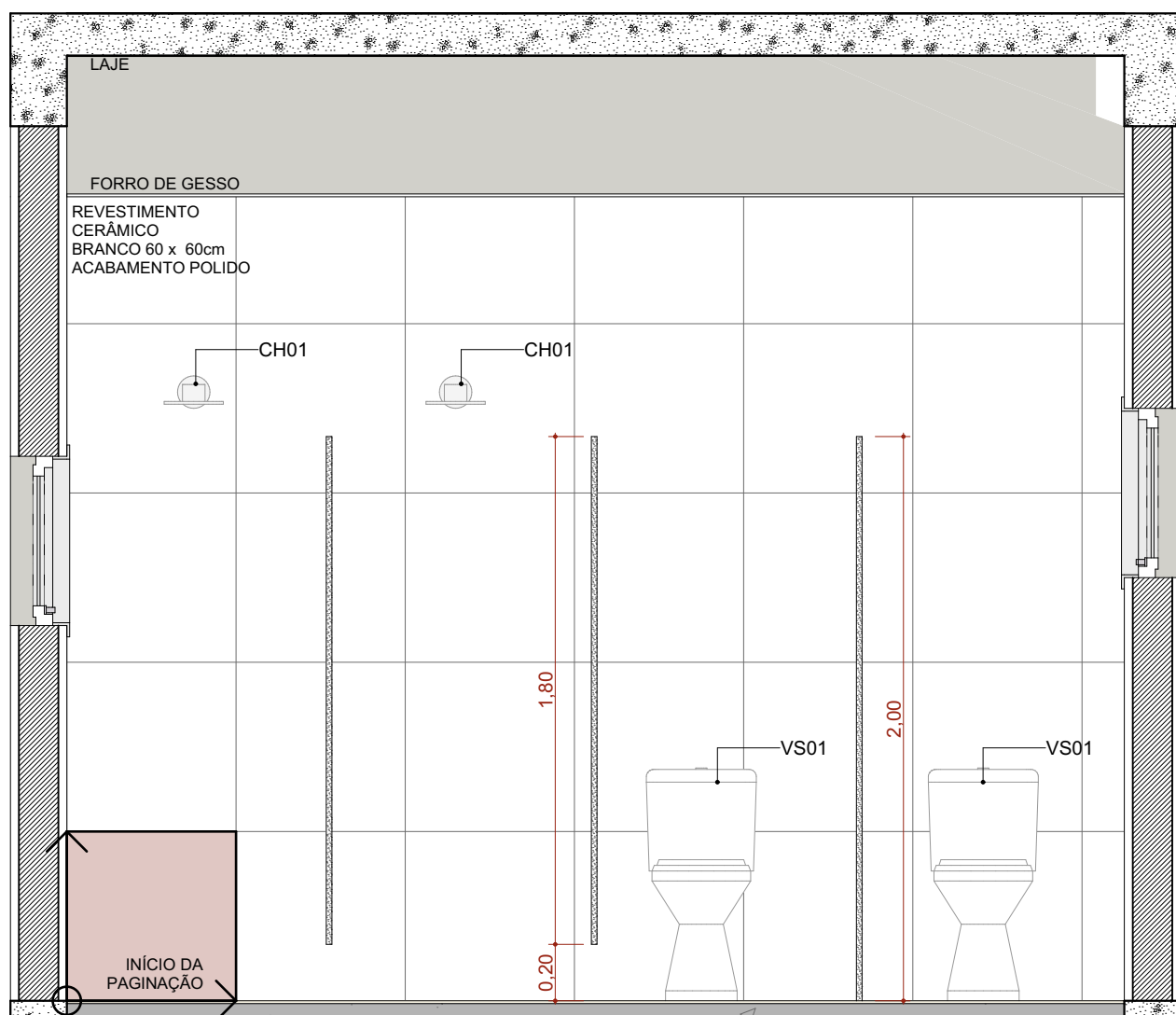
A.M.05 VISTA 04

Escala: 1:25



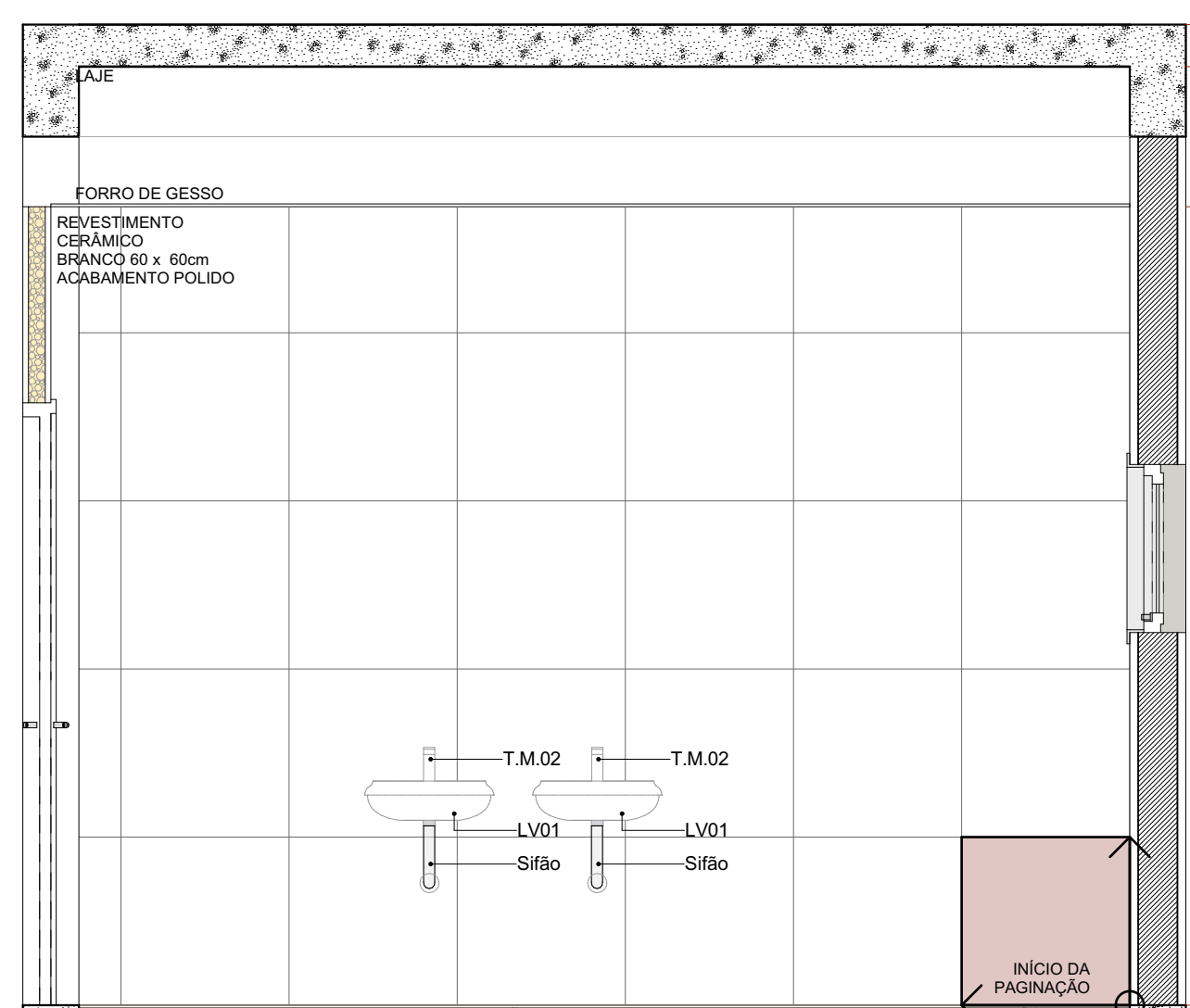
A.M.06 Ban. Func. Fem.

Escala: 1:25



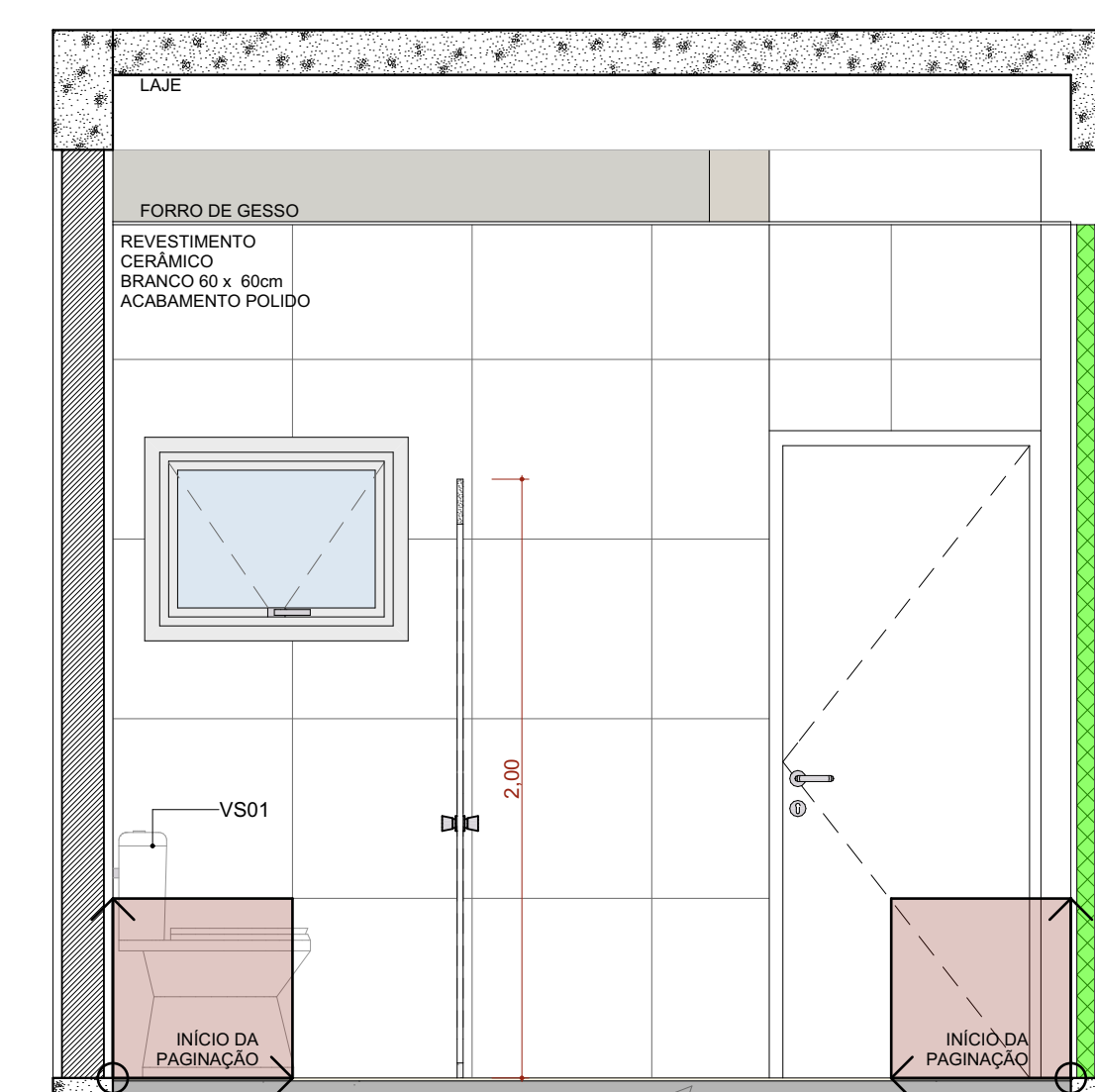
A.M.06 VISTA 02

Escala: 1:25



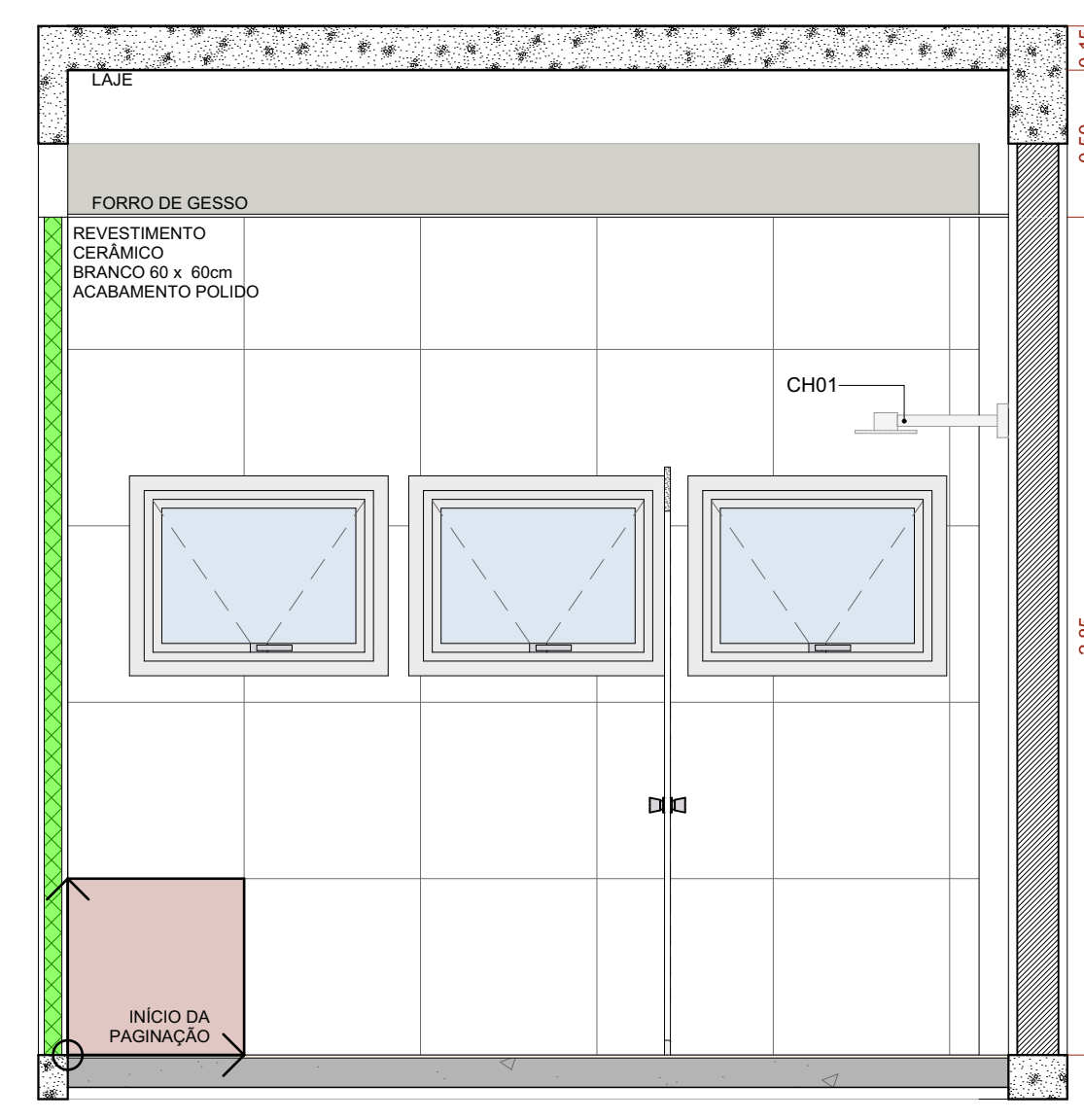
A.M.06 VISTA 01

Escala: 1:25



A.M.06 VISTA 03

Escala: 1:25



A.M.06 VISTA 04

Escala: 1:25

TÍTULO DO PROJETO
UNIDADE BÁSICA DE SAÚDE - PORTE 3

PROPRIETÁRIO
MINISTÉRIO DA SAÚDE

SECRETARIA DE ATENÇÃO PRIMÁRIA À SAÚDE

CNPJ
00.394.544/0108-14

ENGENHEIRO
Secretaria de Atenção Primária à Saúde
Espanhada dos Ministérios Bloco G Edifício Sede - Ministério da Saúde
CEP 70.098-900 - Brasília- DF

TÍTULO DO PROJETO
DETALHAMENTO ÁREAS MOLHADAS 01

DESCRIÇÃO DA ETAPA

PROJETO EXECUTIVO

NOME: PRANCHETA: ARQUIVO
MS_UBS3_PE_AQ 11.13_R00

REVISÃO
R00

UNIDADE
METROS

DATA
29/10/2024

ESCALA
INDICADA

DIRETOS AUTORES RESERVADOR CONFORME LEGISLAÇÃO NACIONAL E INTERNACIONAL

FOLHA 10 DE 10

